

X30 Shifter 125cc – TaG BY IAME

FEATURES - CARACTERISTIQUES



Cylinder volume <i>Volume du cylindre</i>	124.08 cm ³
Bore <i>Alésage</i>	53.89 mm
Max. theoretical bore <i>Alésage théorique max.</i>	54.08 mm
Stroke <i>Course</i>	54.40 mm
Distance between conrod centers <i>Longueur (entre axe) de la bielle</i>	110 mm
Cooling system <i>Système de refroidissement</i>	Water <i>Eau</i>
Inlet system <i>Système d'admission</i>	Reed valve <i>À clapets</i>
Cylinder / crankcase transfers n° <i>N° de canaux cylindre / carter</i>	5 / 3

Carburetor
Carburateur

Dell'Orto
VHSH 30 -
CS

Inlet / exhaust ports number
N° lumières adm. / échapp.

5 / 3

Number of piston rings
Nombre de segments

1

Combustion chamber shape
Forme chambre de combustion

Spherical
Sphérique

Big end conr. bearing diam.
Diamètre palier tête de bielle

20x26x15

Selettra ignition
Allumage Selettra

Digital

Crankshaft bearing diam.
Diamètre palier du vilebrequin

25x52x15 (2Pc.)
15x35x11 (1Pc.)

Generator for battery charging
Générateur de recharge batterie

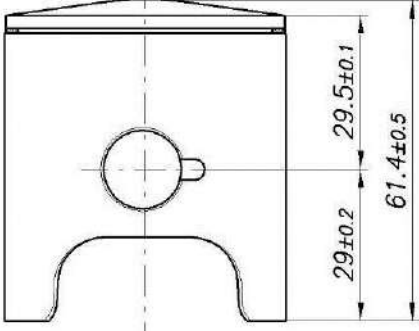
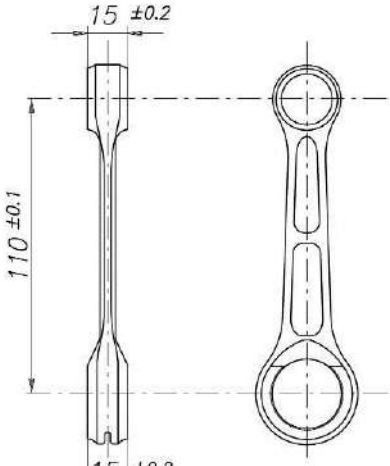
Yes
Oui

Small end conr. bearing diam.
Diamètre palier pied de bielle

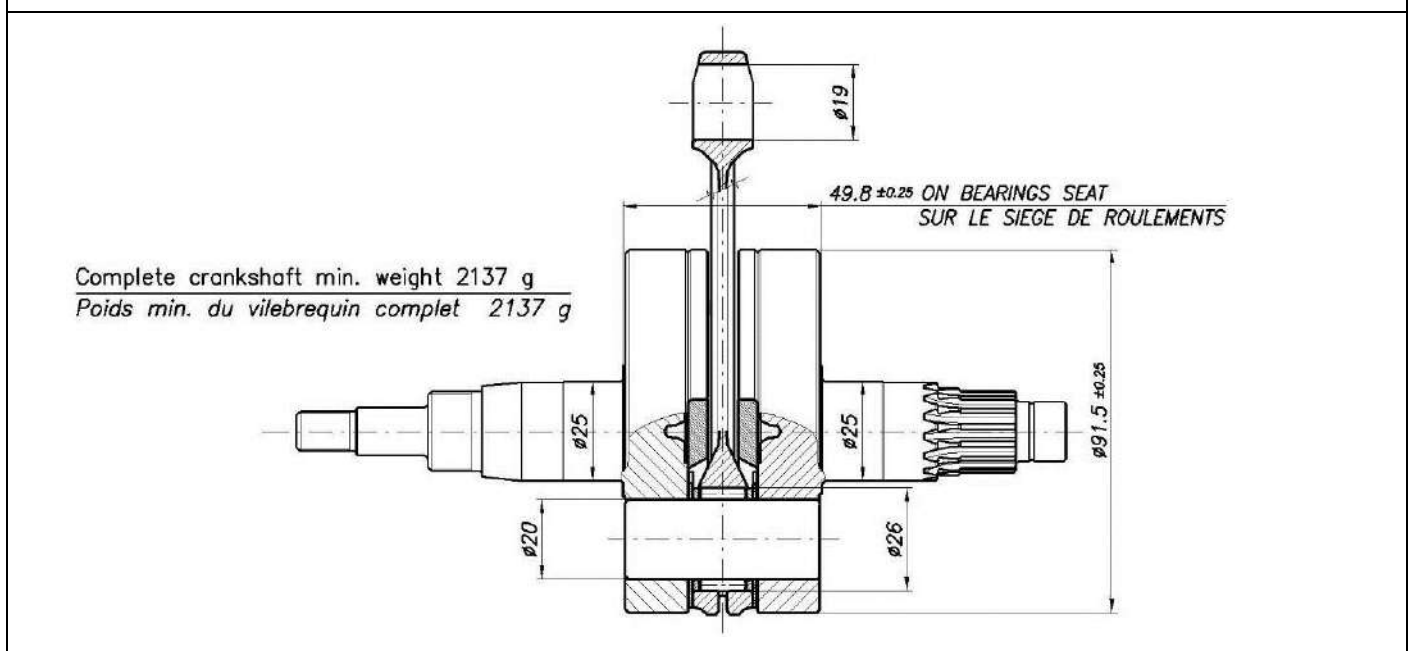
15x19x20

Electric starter
Démarrateur électrique

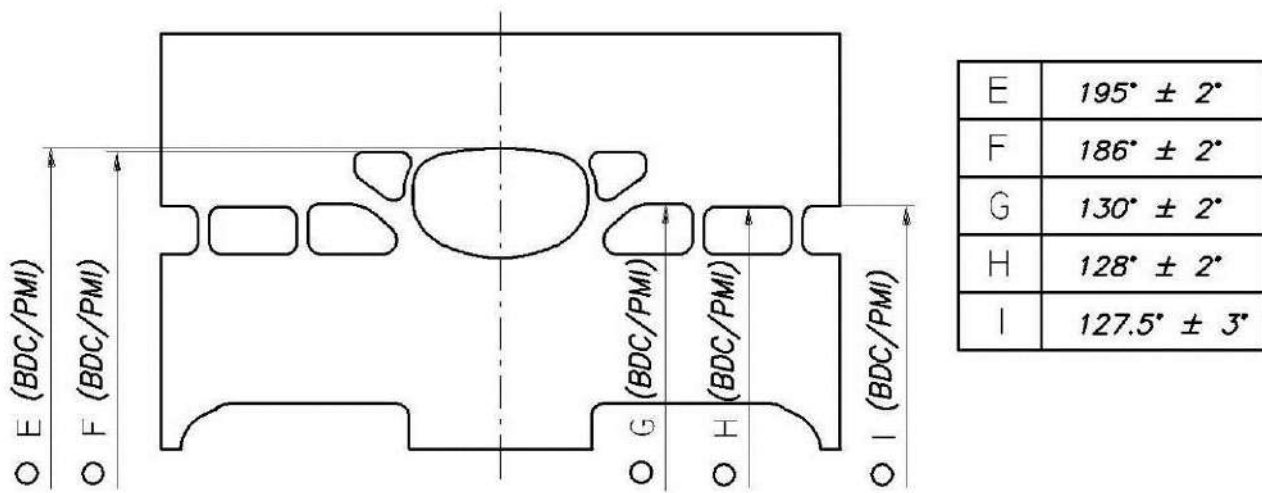
Yes
Oui

DESCRIPTION OF THE MATERIAL <i>DESCRIPTION DES MATERIAUX</i>		PISTON
Conrod material <i>Matériel de la bielle</i>	Steel <i>Acier</i>	 <p>Piston min. weight (ring incl.) 114 g <i>Poids min. piston (avec segment) 114 g</i></p>
Crankshaft material <i>Matériel du vilebrequin</i>	Steel <i>Acier</i>	
Gearbox shafts material <i>Matériel de l'arbres de boîte de vitesses</i>	Steel <i>Acier</i>	
Gears material <i>Matériel des engrenages</i>	Steel <i>Acier</i>	
Starter ring material <i>Matériel de la couronne démarr.</i>	Steel / <i>Acier</i> or / ou Aluminium	
Head material <i>Matériel de la culasse</i>	Aluminium	DISTANCE BETWEEN CONROD CENTERS <i>ENTRE AXE DE LA BIELLE</i>
Cylinder material <i>Matériel du cylindre</i>	Aluminium	 <p>Min. weight 110 g <i>Poids min. 110 g</i></p>
Liner material <i>Matériel de la chemise</i>	Iron <i>Fonte</i>	
Crankcase material <i>Matériel du carter</i>	Aluminium	
Piston material <i>Matériel du piston</i>	Aluminium	
Piston rings material <i>Matériel des segments</i>	Iron <i>Fonte</i>	
Exhaust muffler material <i>Matériel du pot d'échappement</i>	Sheet-steel <i>Tôle acier</i>	

CRANKSHAFT – VILEBREQUIN



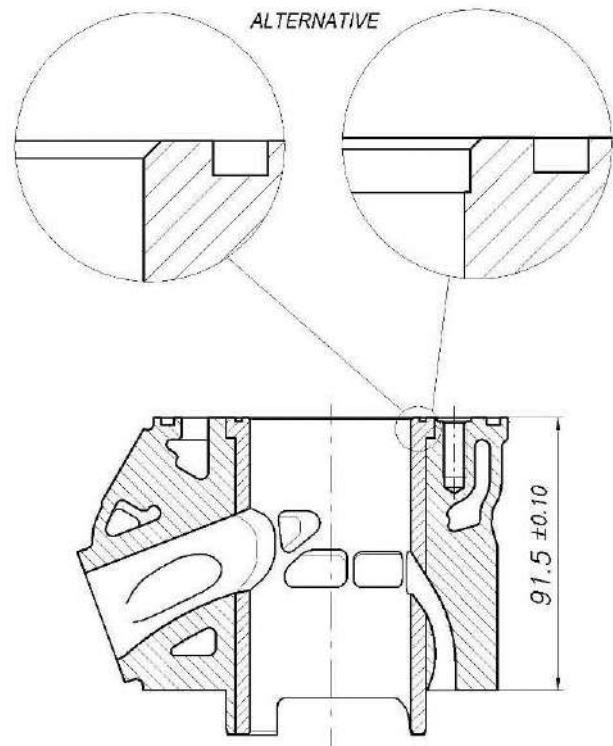
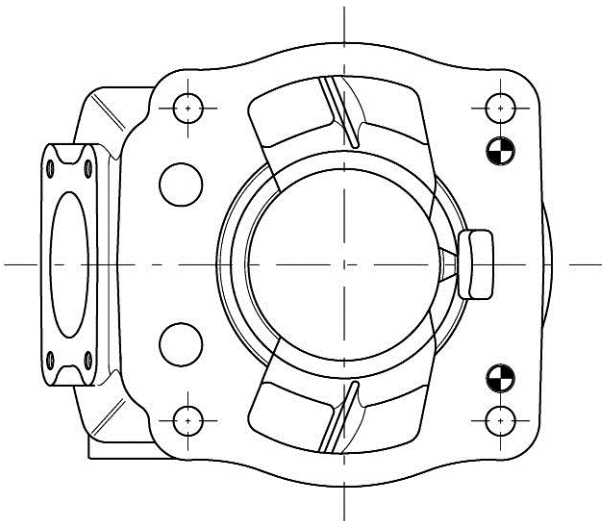
CYLINDER DEVELOPMENT - DEVELOPPEMENT DU CYLINDRE



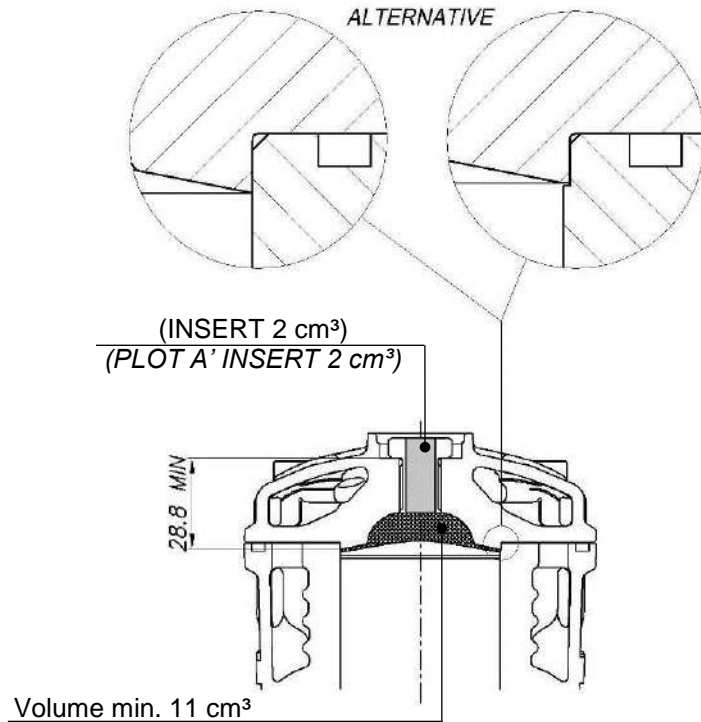
○ ANGULAR READING BY INSERTING A 0.2x5mm GAUGE
 LECTURE ANGULAIRE PAR INSERTION D'UNE CALE DE 0.2x5mm

CYLINDER BASE VIEW
 VUE DE LA BASE DU CYLINDRE

CYLINDER CROSS SECTION VIEW
 VUE EN SECTION DU CYLINDRE



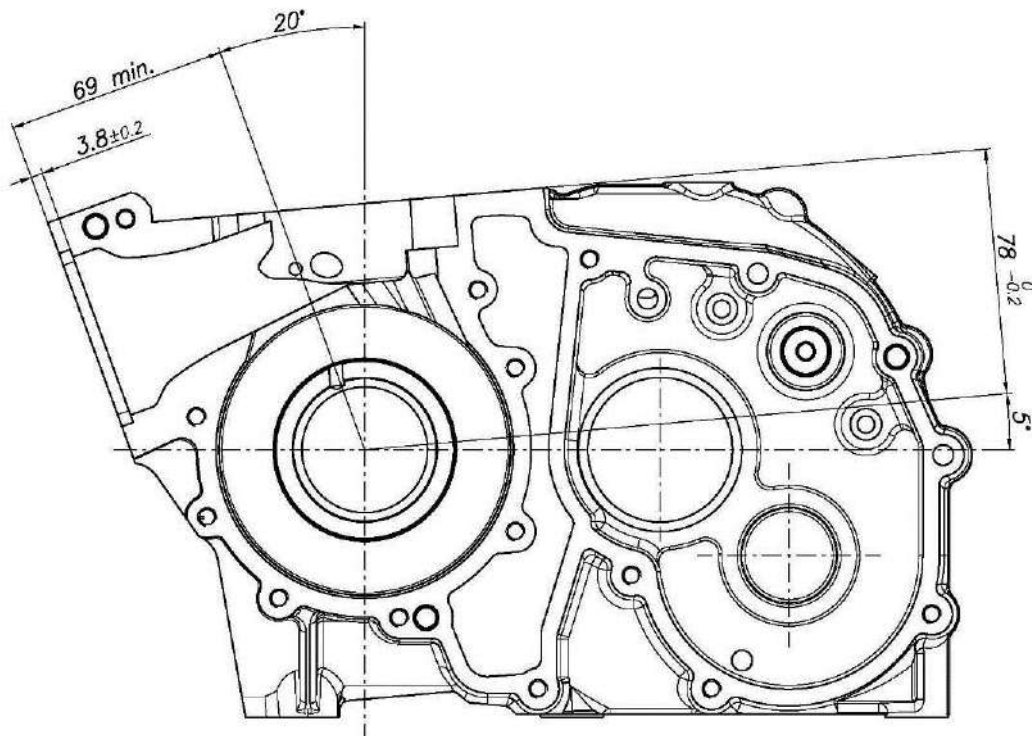
COMBUSTION CHAMBER VIEW
VUE DE LA CHAMBRE DE COMPRESSION



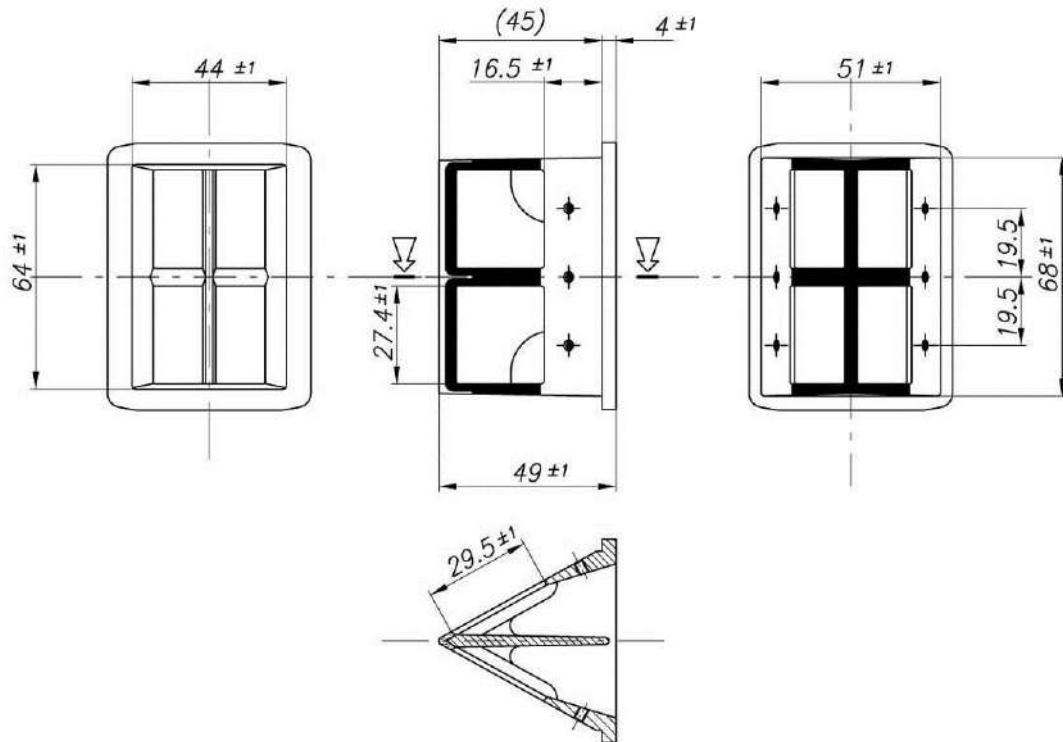
COMBUSTION CHAMBER VOLUME TOT. = 13 cm³ min.
VOLUME CHAMBRE COMBUSTION TOT. = 13 cm³ min.

SQUISH MIN. = 0.85 mm
(measured with Ø1.5mm TIN - mesurée avec de l'étain Ø1.5mm)

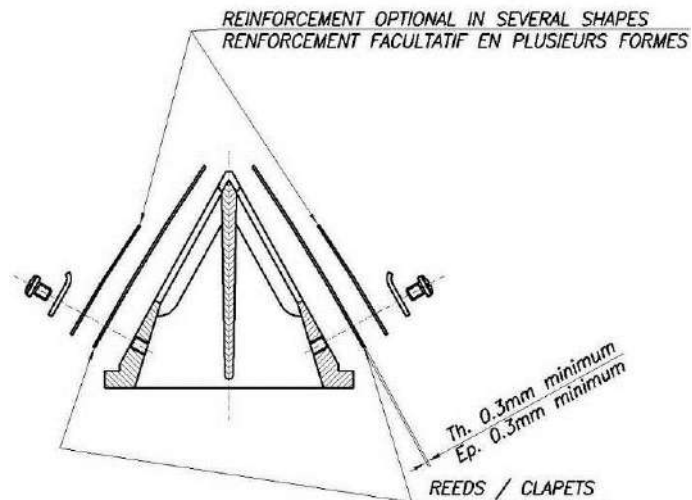
CRANKCASE INSIDE VIEW
VUE A' L' INTERIEUR DU CARTER



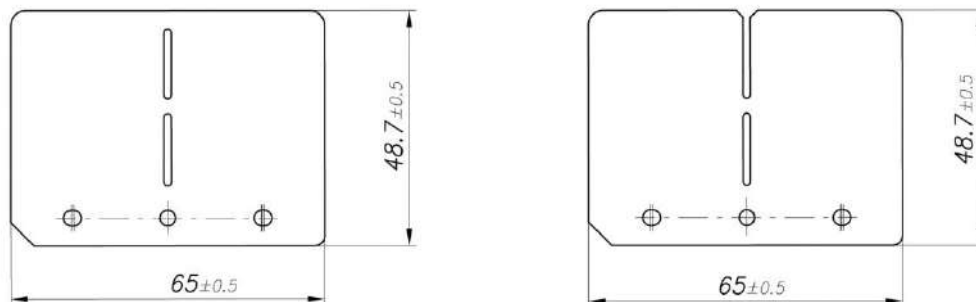
REED VALVE
BOÎTE À CLAPETS



ASSEMBLY OF REED VALVE
DESSIN D'ENSEMBLE DE LA BOÎTE À CLAPETS



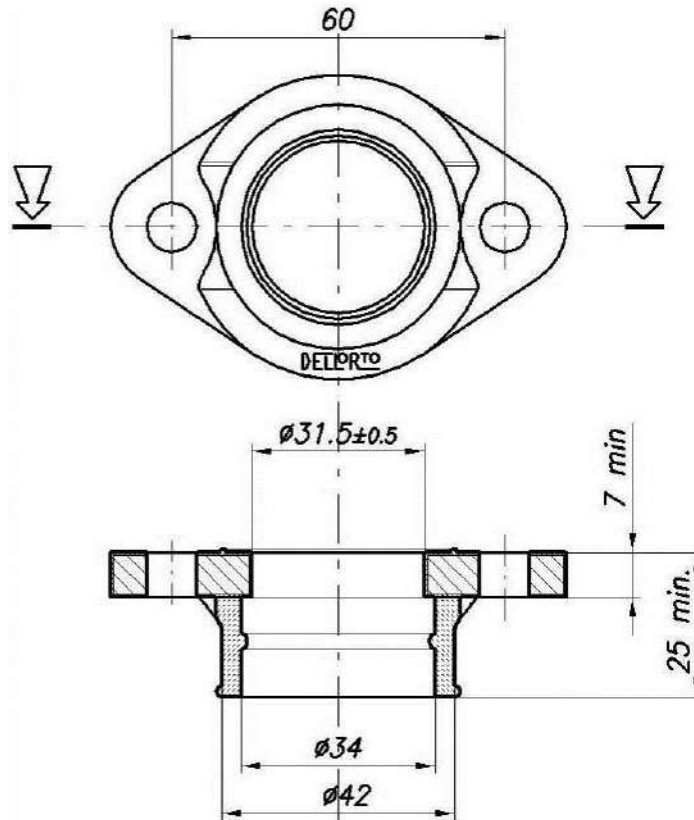
REEDS / CLAPETS



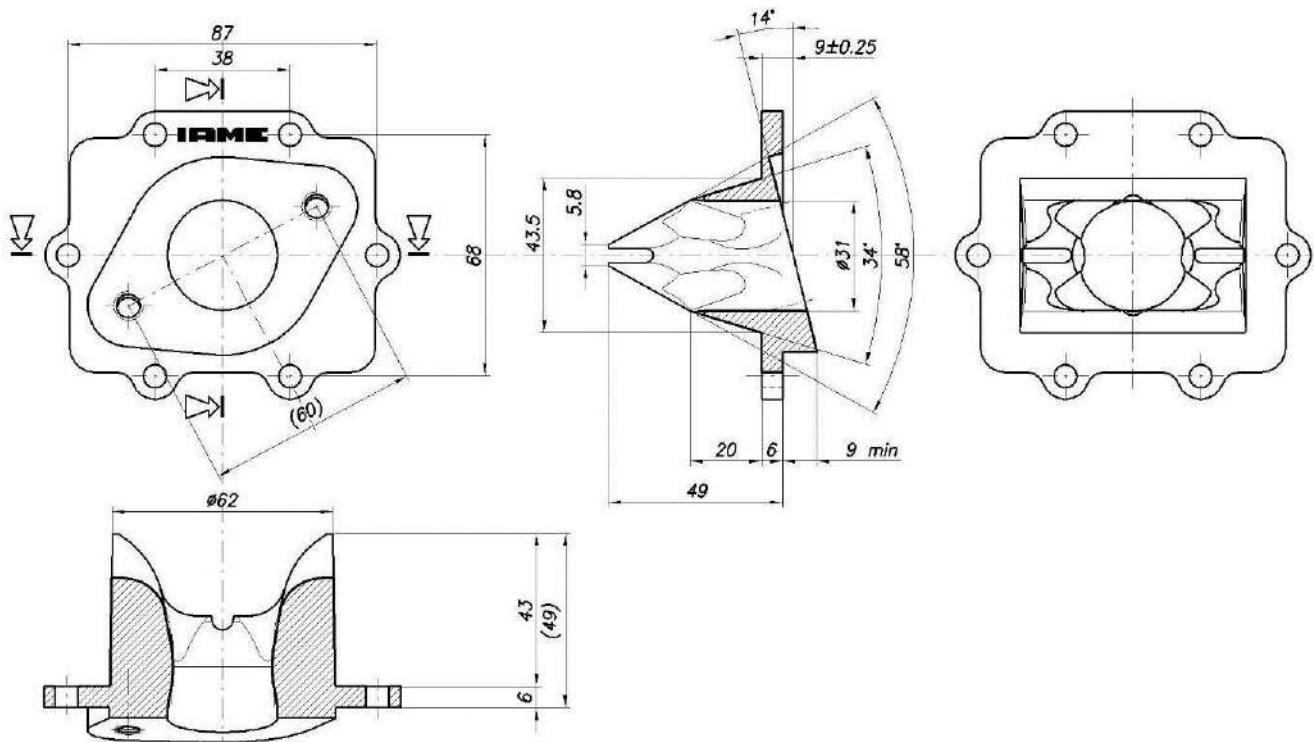
N.B.: ONLY REED "IAME" GENUINE CARBON FIBER ARE PERMITTED.

N.B. : SEULS LES CLAPETS D'ORIGINE "IAME" EN FIBRE DE CARBONE SONT AUTORISES.

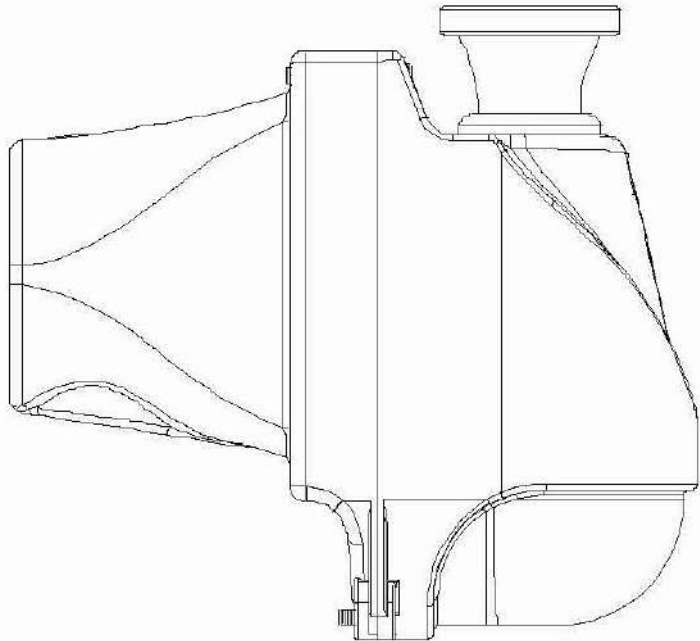
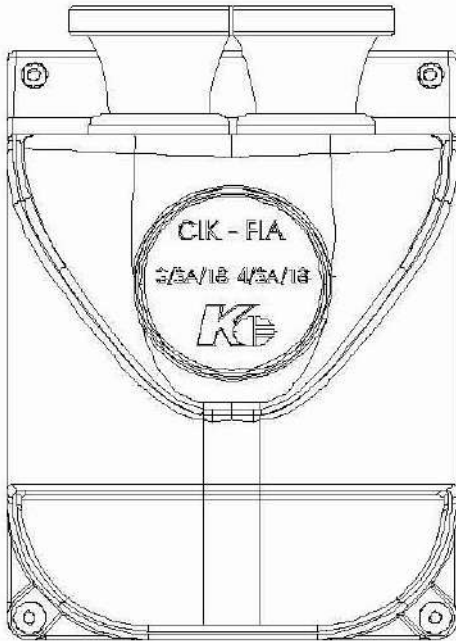
CARBURETOR FITTING RUBBER
 RACCORD DU CARBURATEUR EN CAOUTCHOUC



REED VALVE COVER
 COUVERCLE DE LA BOÎTE A CLAPETS

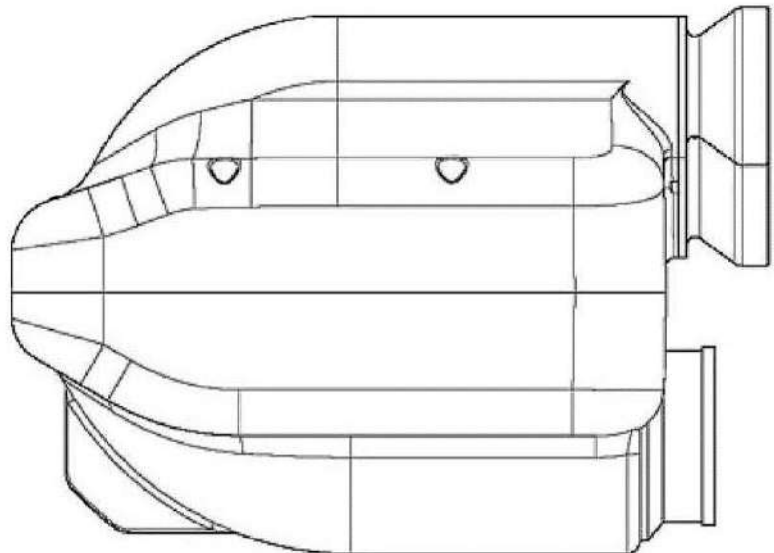
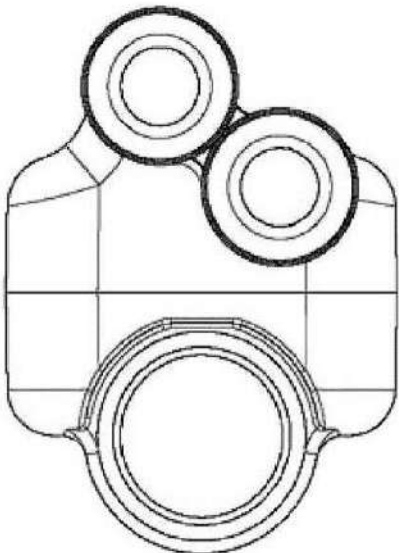


INLET SILENCER
SILENCIEUX D'ASPIRATION



Mod. APE1 (KG)
Ø30mm Hom. CIK/FIA 3/SA/18
or/ou
Mod. APE2 (KG)
Ø23mm Hom. CIK/FIA 4/SA/18

OR / OU



Mod. NOX (Righetti & Ridolfi)
Ø30mm Hom. CIK/FIA 19/SA/18
or/ou
Ø23mm Hom. CIK/FIA 16/SA/18

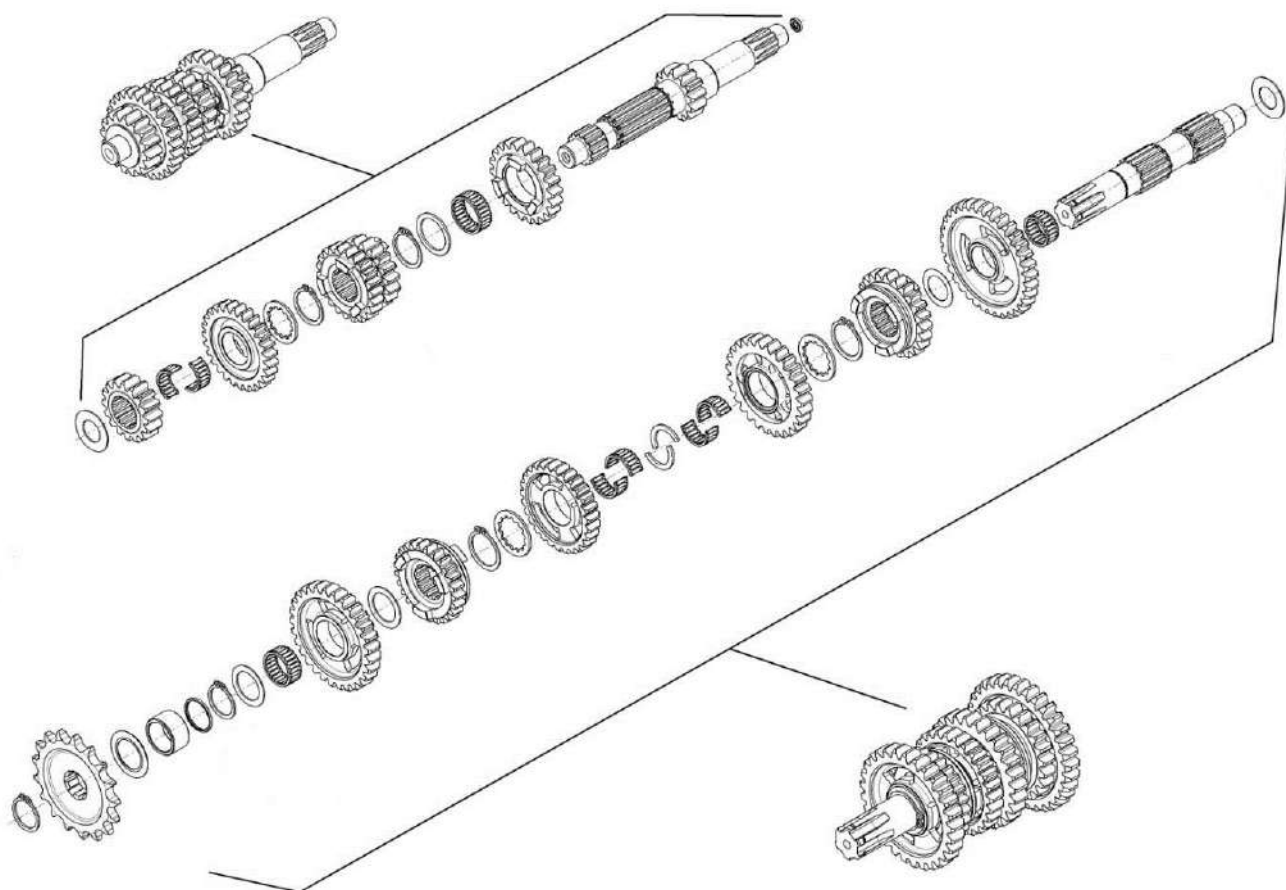
Following technical regulation
Selon règlement technique

GEARBOX - BOÎTE DE VITESSES

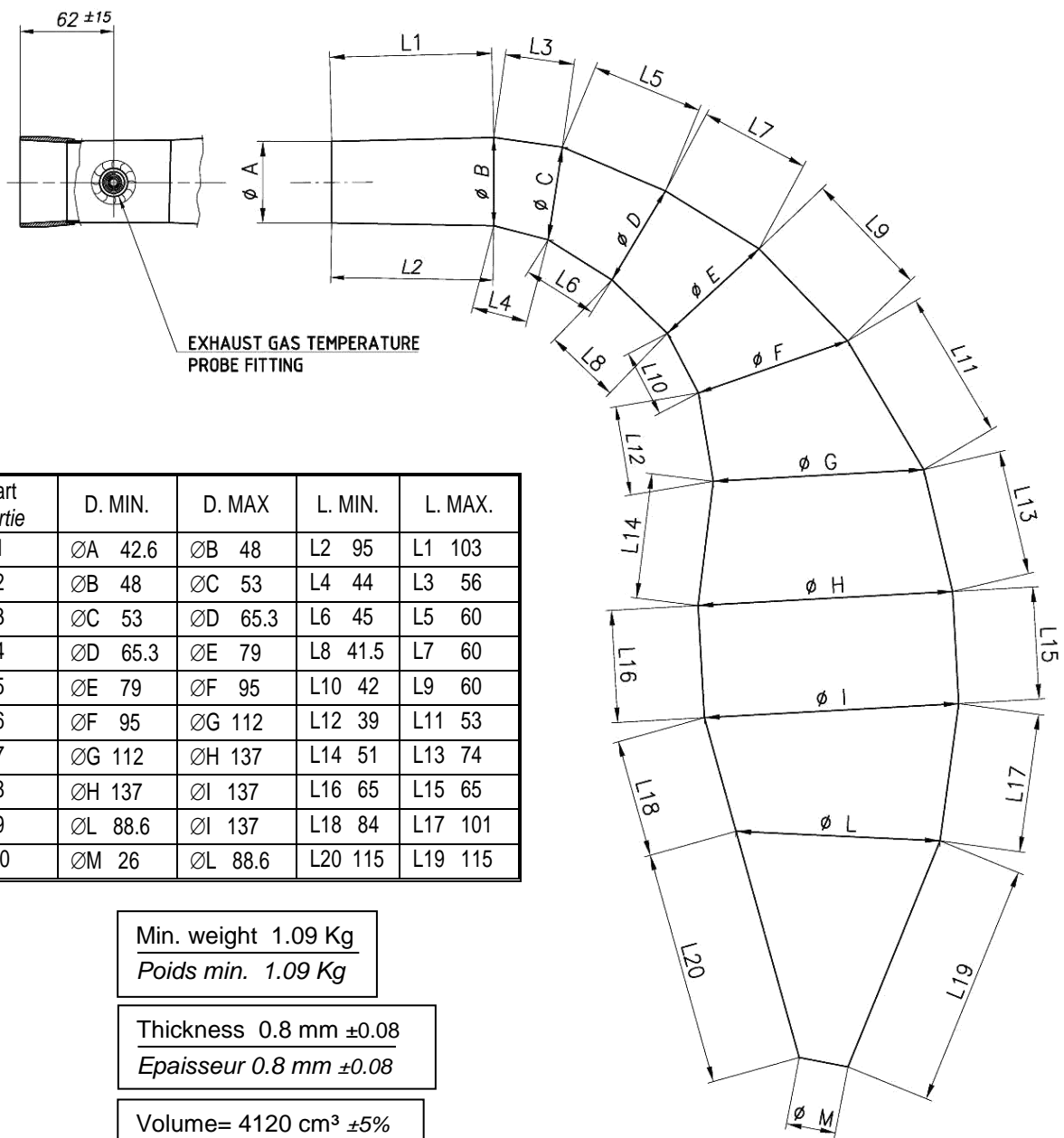
Primary coupling - *Couple primaire* **19 / 75**

Gearbox ratios		<i>Rapports de boîte de vitesses</i>	
Gear - <i>Vitesse</i>	Primary shaft <i>Arbre primaire</i>	Secondary shaft <i>Arbre secondaire</i>	Reading of values obtained after three engine revs <i>Relevé des valeurs obtenues après trois tours moteur</i>
1 st / 1 ^{ere}	<u>13</u>	<u>33</u>	<u>107.8°</u>
2 nd / 2 ^e	<u>16</u>	<u>29</u>	<u>151.00°</u>
3 rd / 3 ^e	<u>18</u>	<u>27</u>	<u>182.4°</u>
4 th / 4 ^e	<u>22</u>	<u>27</u>	<u>222.9°</u>
5 th / 5 ^e	<u>22</u>	<u>23</u>	<u>261.7°</u>
6 th / 6 ^e	<u>27</u>	<u>25</u>	<u>295.5°</u>

EXPLODED DRAWING OF THE GEARS, MAINSHAFT AND SECONDARY SHAFT
DESSIN EXPLOSED DES ENGRANAGES, ARBRE PRIMARIE ET ARBRE SECONDARIE



EXHAUST VIEW, PHOTO, MARKING AND DIMENSIONS
 VUE, PHOTO, MARQUAGE ET DIMENSIONS DE L'ÉCHAPPEMENT



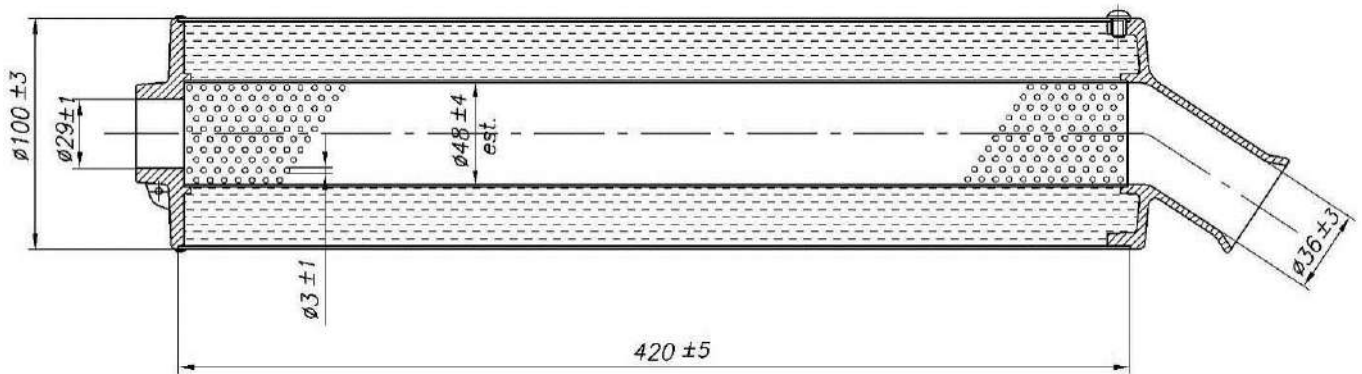
Part Partie	D. MIN.	D. MAX	L. MIN.	L. MAX.
1	ØA 42.6	ØB 48	L2 95	L1 103
2	ØB 48	ØC 53	L4 44	L3 56
3	ØC 53	ØD 65.3	L6 45	L5 60
4	ØD 65.3	ØE 79	L8 41.5	L7 60
5	ØE 79	ØF 95	L10 42	L9 60
6	ØF 95	ØG 112	L12 39	L11 53
7	ØG 112	ØH 137	L14 51	L13 74
8	ØH 137	ØI 137	L16 65	L15 65
9	ØL 88.6	ØI 137	L18 84	L17 101
10	ØM 26	ØL 88.6	L20 115	L19 115

Min. weight 1.09 Kg
 Poids min. 1.09 Kg

Thickness 0.8 mm ±0.08
 Epaisseur 0.8 mm ±0.08

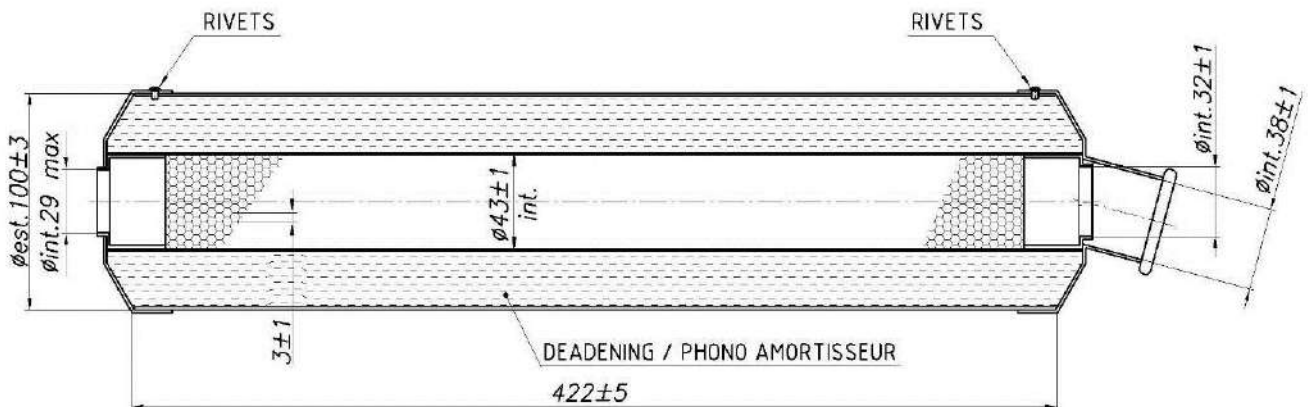
Volume= 4120 cm³ ±5%

ELTO SILENCER VIEW, PHOTO AND DIMENSIONS
 VUE, PHOTO ET DIMENSIONS DU SILENCIEUX ELTO



“Elto Racing” Hom. FIK 104 1300 / 09 S

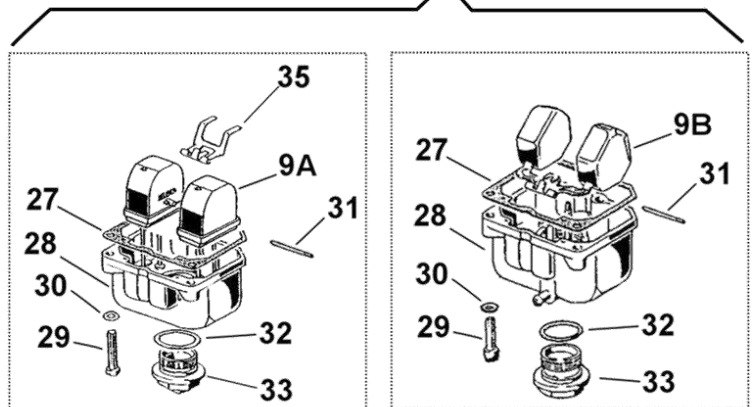
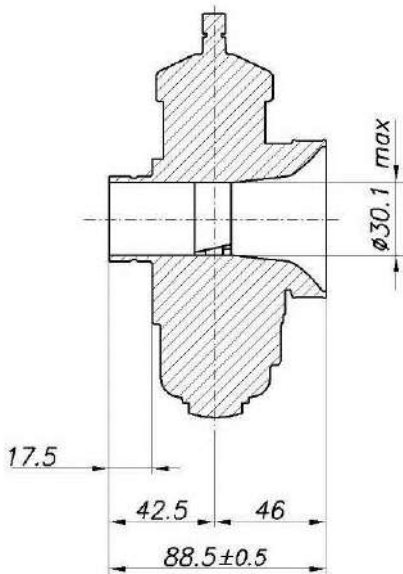
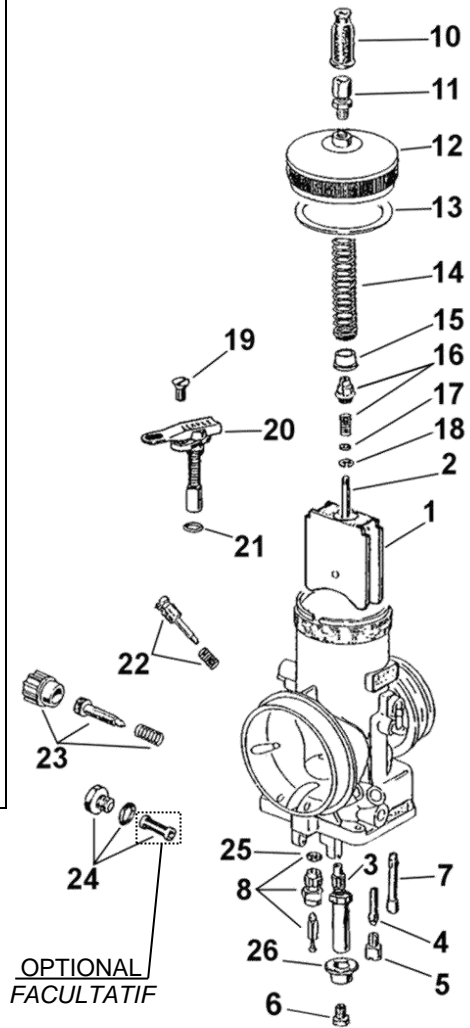
MC RACING SILENCER VIEW, PHOTO AND DIMENSIONS
 VUE, PHOTO ET DIMENSIONS DU SILENCIEUX MC RACING



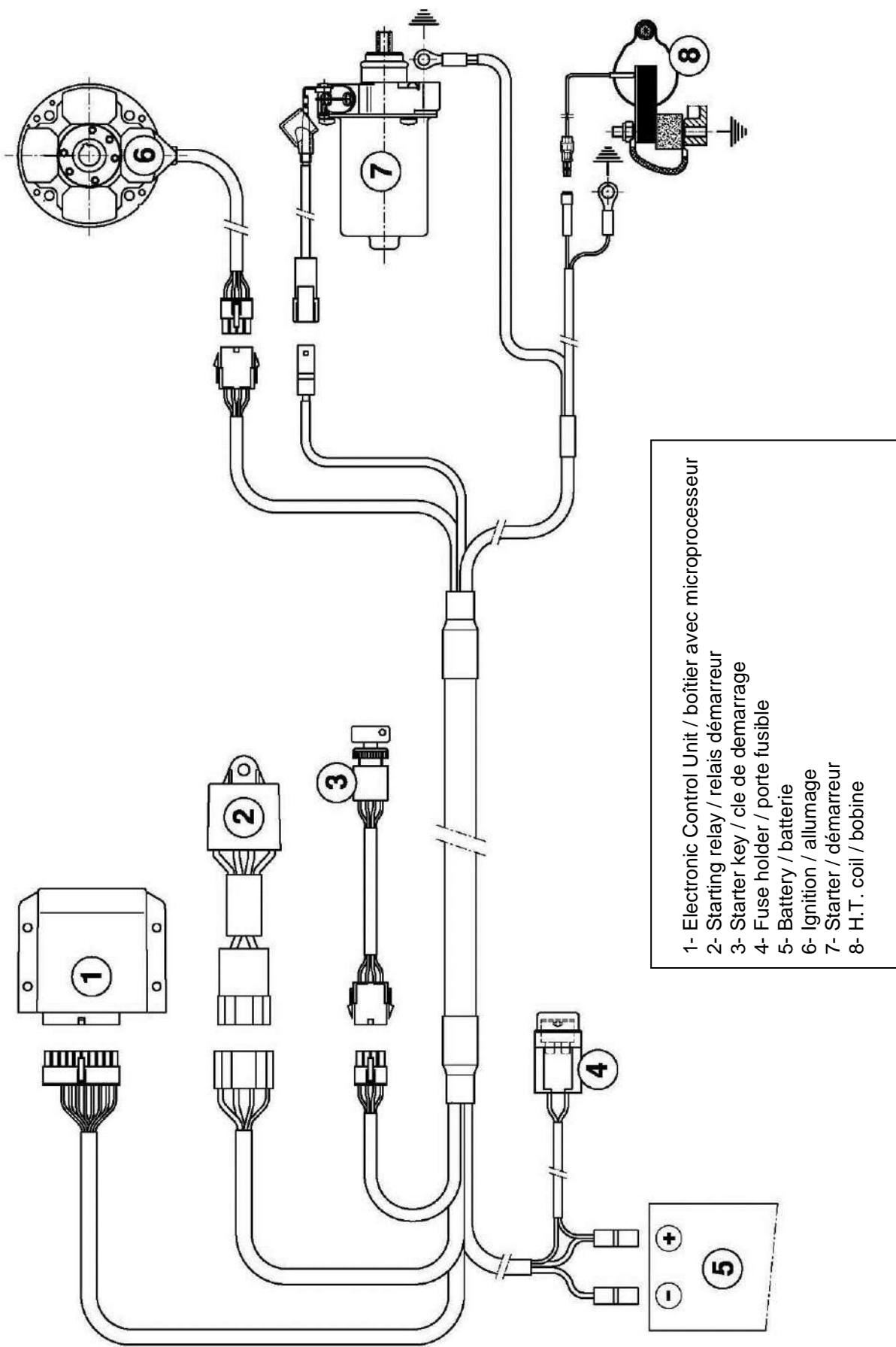
“MC Racing” Hom. CSAI 1041695 / 12

EXPLODED DRAWING AND VENTURI CARB. "DELLORTO VHSH 30-CS" DIMENSIONS
 DESSIN EXPLOSÉ ET DIMENSIONS DU VENTURI DU CAR. "DELLORTO VHSH 30-CS"

1. Throttle Valve - SOUPE GAZ
2. Conical Needle - AIGUILLE CONIQUE
3. Sprayer - PULVERISATEUR
4. Minimum Emulsifier - EMULSIONNEUR
5. L. Jet - GICLEUR MIN.
6. H Jet - GICLEUR MAX.
7. Starter Jet - GICLEUR DEMARREUR
8. Needle Valve - POINTEAU
- 9A. Single Floating - FLOTTEUR INDEPENDANT
- 9B. Coupled Floating - PAIRE DE FLOTTEUR
10. Cap - BOUCHON
11. Screw Adjuster - VIS REGLAGE
12. Cover Mixing Chamber - COUVERCLE CHAMBRE DE MELANGE
13. Cover Gasket - JOINT COUVERCLE
14. Throttle Return Spring - RESSORT RETOUR SOUPE
15. Bottom Spring Guide - CULOT
16. Nipple Throttle Valve + Spring - RACCORD ROBINET GAZ + RESSORT
17. Washer - RONDELLE
18. Clip Needle - FERMOIR POINTEAU
19. Start Fixing Screw - VIS FIXATION DISPOSITIF DEMARRAGE
20. Starter Device - DISPOSITIF DEMARRAGE
21. Starter Device Seal - JOINT DISP. DEMARRAGE
22. Idle Mixture Screw - VIS MELANGE MINIMUM
23. Kit Throttle Adjusting Screw - KIT VIS REGLAGE SOUPE
24. Kit Fuel Filter - KIT FILTRE CARBURANT
25. Needle Valve Seal - JOINT POINTEAU
26. Bottom - CULOT
27. Gasket - JOINT
28. Float Chamber - CUVETTE
29. Fixing Screw Float Chamber - VIS FIXATION CUVETTE
30. Spring Washer - RONDELLE RESSORT
31. Pin Float - AXE DE FLOTTEUR
32. Tank Cap Seal - JOINT BOUCHON CUVETTE
33. Float Chamber Plug - BOUCHON CUVETTE
35. Rocker Float - BALANCIER FLOTTEUR

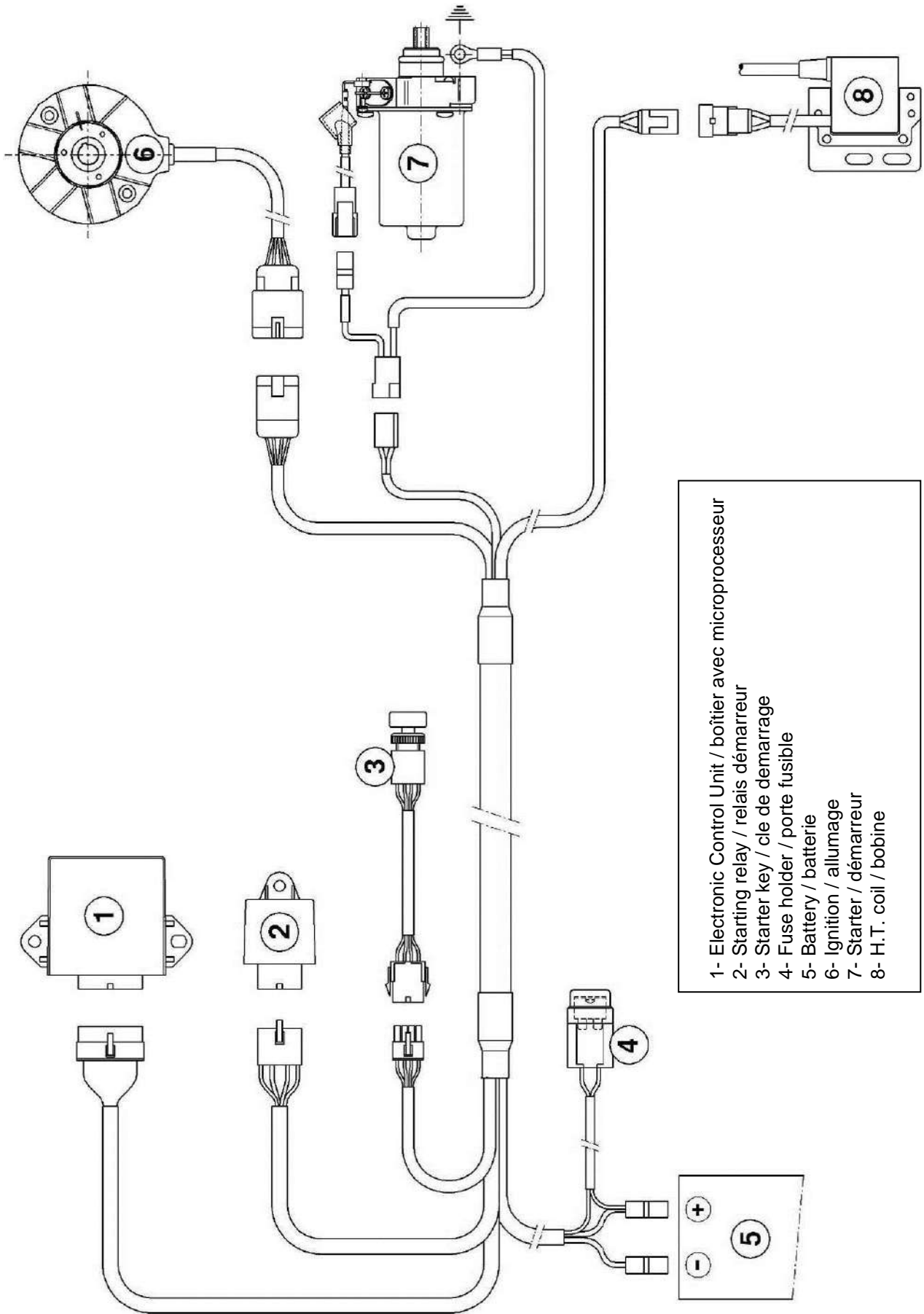


WIRING DIAGRAM (SELETTRA DIGITAL "K" IGNITION)
 SCHEMA CIRCUIT ELECTRIQUE (ALLUMAGE SELETTRA DIGITAL "K")



- 1- Electronic Control Unit / boîtier avec microprocesseur
 2- Starting relay / relais démarrage
 3- Starter key / cle de démarrage
 4- Fuse holder / porte fusible
 5- Battery / batterie
 6- Ignition / allumage
 7- Starter / démarreur
 8- H.T. coil / bobine

WIRING DIAGRAM (PVL DIGITAL "K" IGNITION)
 SCHEMA CIRCUIT ELECTRIQUE (ALLUMAGE PVL DIGITAL "K")

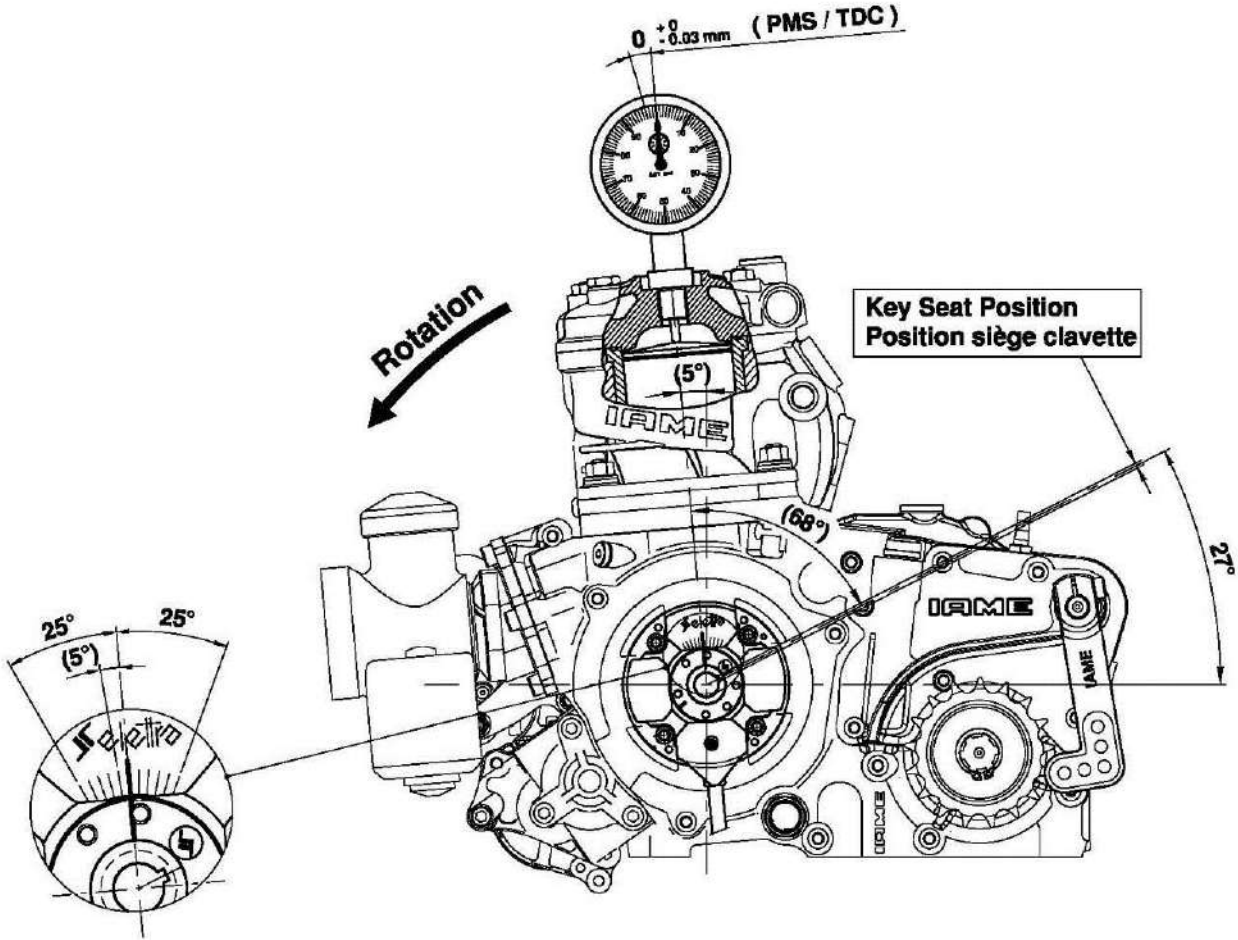


- 1- Electronic Control Unit / boîtier avec microprocesseur
- 2- Starting relay / relais démarreur
- 3- Starter key / cle de démarrage
- 4- Fuse holder / porte fusible
- 5- Battery / batterie
- 6- Ignition / allumage
- 7- Starter / démarreur
- 8- H.T. coil / bobine

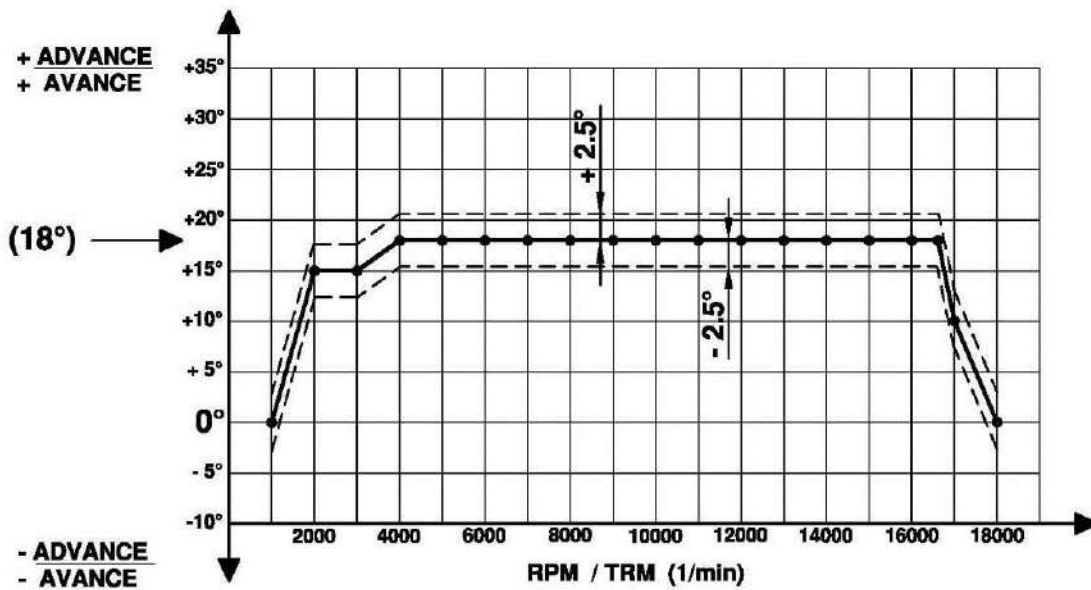
SELETTRA - ELECTRONIC BOX MARKING
SELETTRA - MARQUAGE DU BOITIER ELECTRONIQUE



SCHEME FOR ADVANCE CONTROL
 SCHEMA DE CONTROLE POUR L'AVANCE



ADVANCE CURVE GRAPHS / GRAPHIQUES DE LA COURBE D'AVANCE



PISTON IDENTIFICATION MARKING
 MARQUAGE D'IDENTIFICATION PISTON

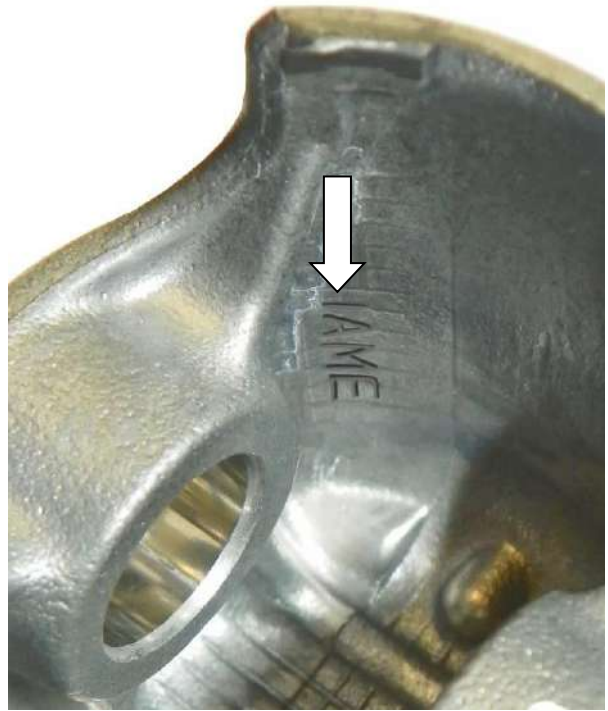
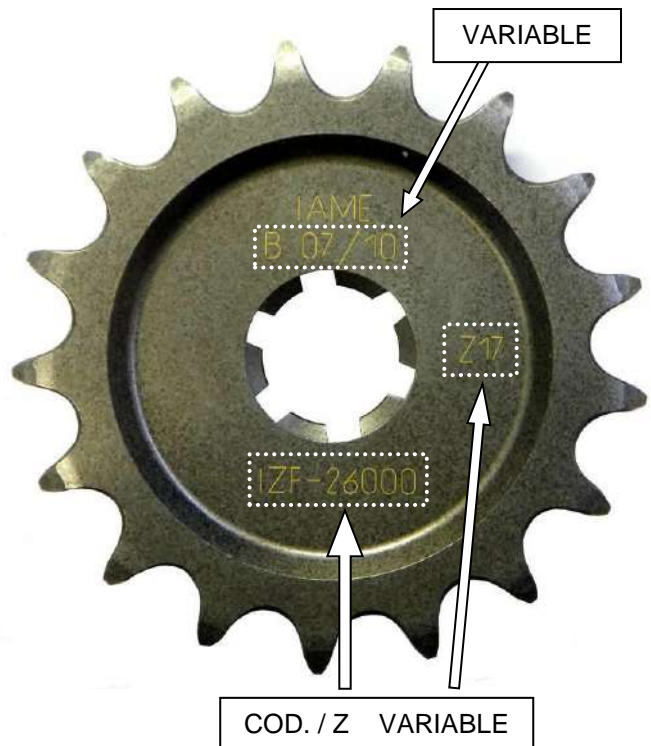


PHOTO IDENTIFICATION CONROD
 MARQUAGE D'IDENTIFICATION BIELLE

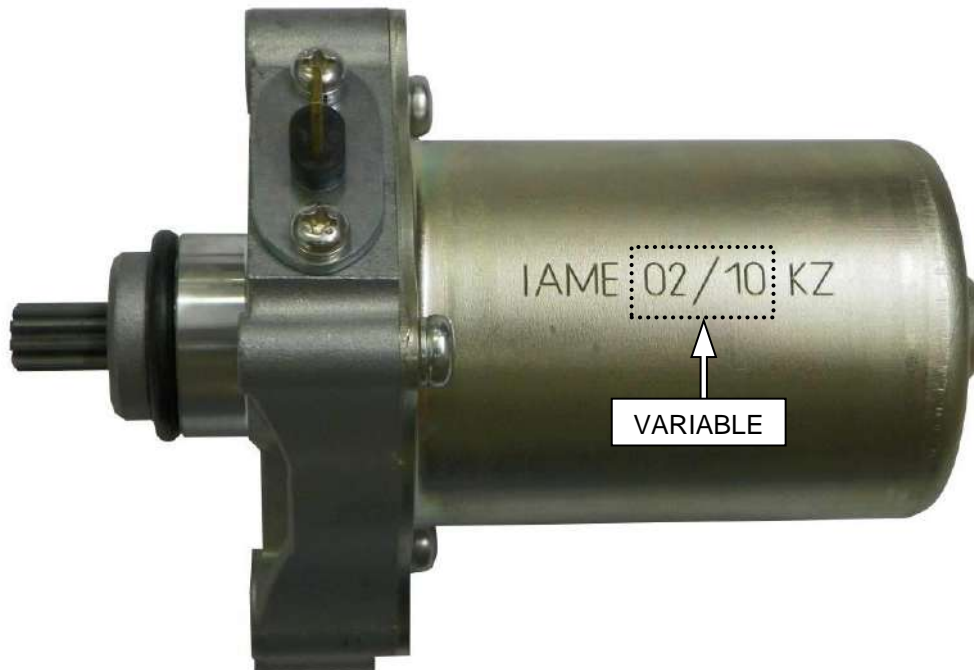
SPROCKET IDENTIFICATION MARKING
 MARQUAGE D'IDENTIFICATION DU PIGNON



CRANKSHAFT IDENTIFICATION MARKING
MARQUAGE D'IDENTIFICATION DU VILEBREQUIN



STARTER IDENTIFICATION MARKING
MARQUAGE D'IDENTIFICATION DU MOTEUR DEMARREUR



REED GROUP & PETALS IDENTIFICATION MARKING
MARQUAGE D'IDENTIFICATION DE LA PYRAMIDE DE CLAPETS & CLAPETS



PHOTO IDENTIFICATION CARBURETOR INLET CONVEYOR
MARQUAGE D'IDENTIFICATION DU COLLECTEUR D'ASPIRATION



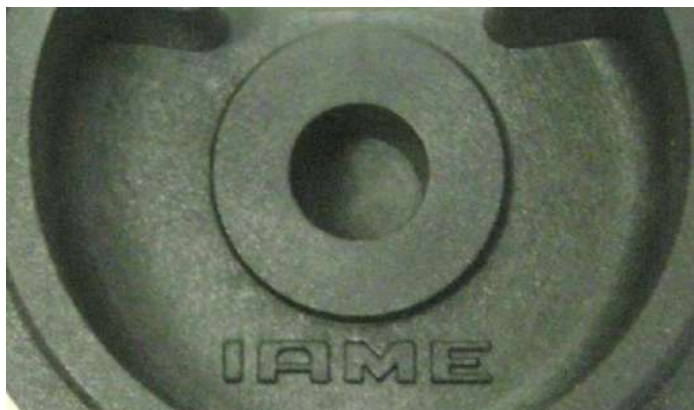
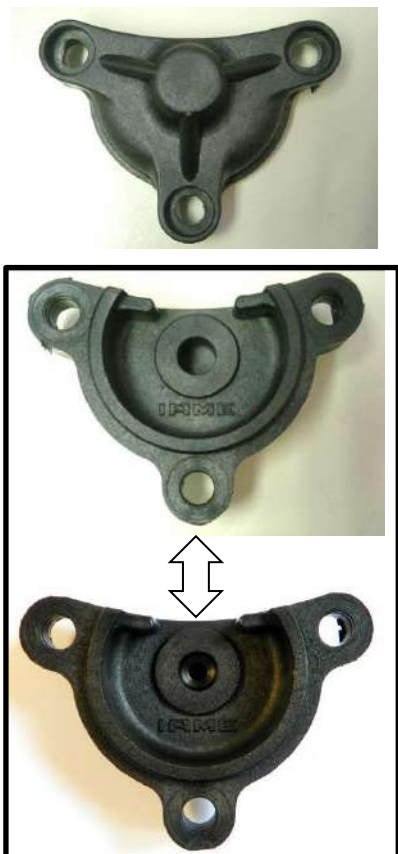
H.T. COIL IDENTIFICATION MARKING
 MARQUAGE DE LA BOBINE



STATOR IDENTIFICATION MARKING
 MARQUAGE D'IDENTIFICATION DU STATOR



BENDIX COVER IDENTIFICATION MARKING
 MARQUAGE D'IDENTIFICATION DU COUVERCLE DU CONTRE-ARBRE DE DEMARRAGE



ALTERNATIVE



STARTER GEAR
COURONNE DEMARREUR



Old version - while stocks last
Vieille version - jusqu'à épuisement des stocks

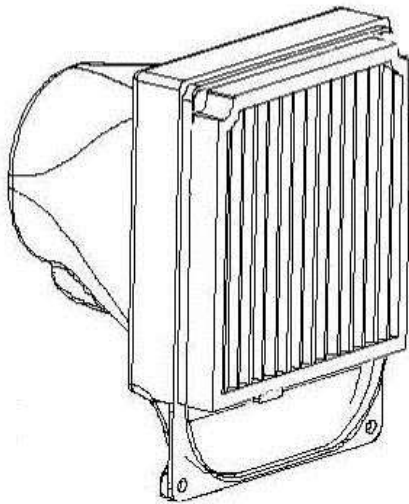


Second version
Seconde version

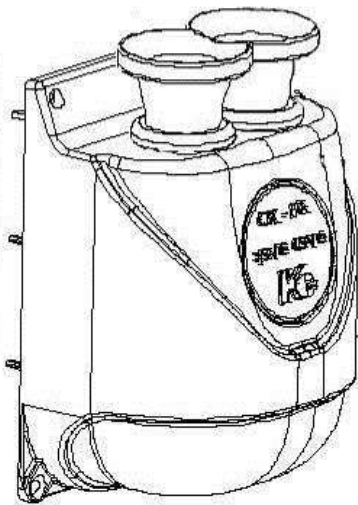
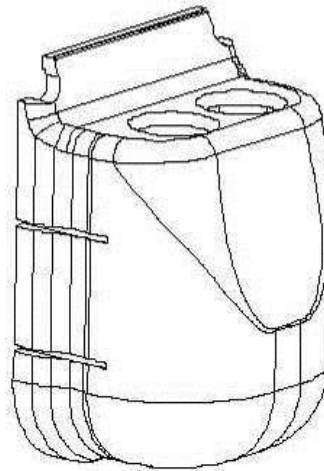


New version
Dernière version

INLET SILENCER
SILENCIEUX D'ASPIRATION



Mod. APE1 (KG)
Ø30mm Hom. CIK/FIA 3/SA/18
or/ou
Mod. APE2 (KG)
Ø23mm Hom. CIK/FIA 4/SA/18

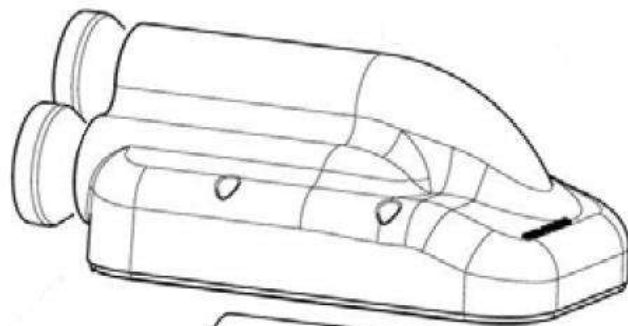


Noise-absorbing element
Élément acoustique absorbant

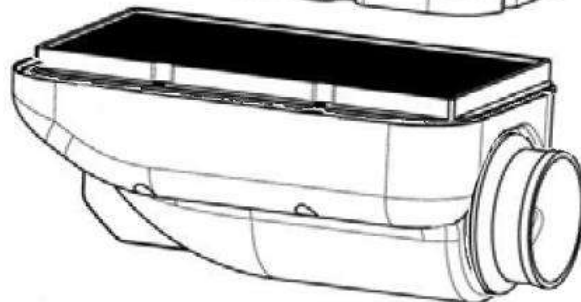
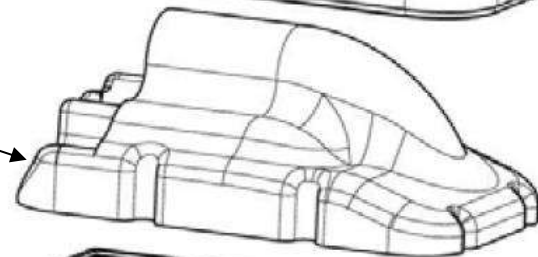
OR / OU

Mod. NOX (Righetti & Ridolfi)
Ø30mm Hom. CIK/FIA 19/SA/18
or/ou
Ø23mm Hom. CIK/FIA 16/Sa/18

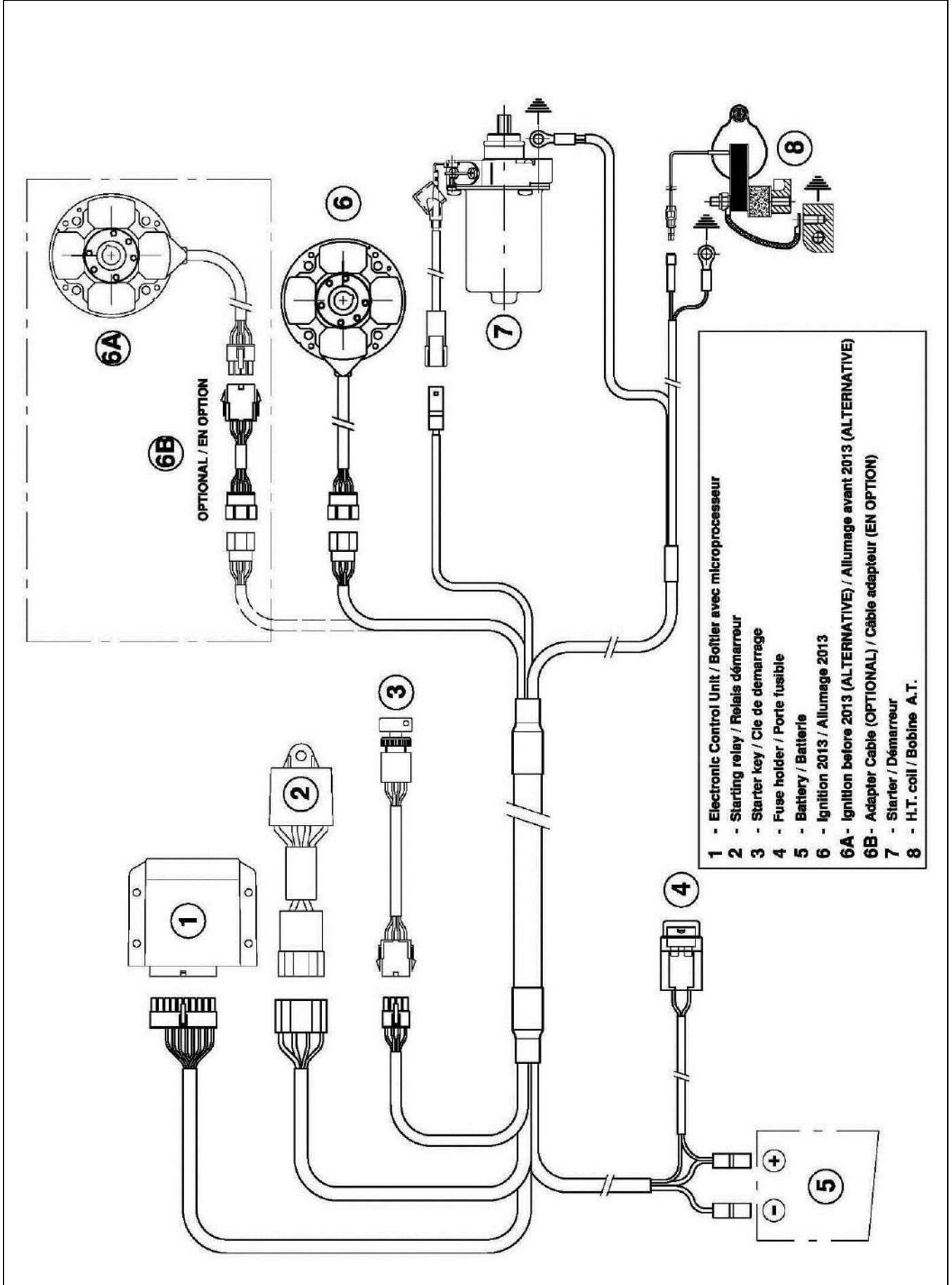
SUPPLEMENT TO / COMPLEMENT
02/01/SUP



Noise-absorbing element
Élément acoustique absorbant



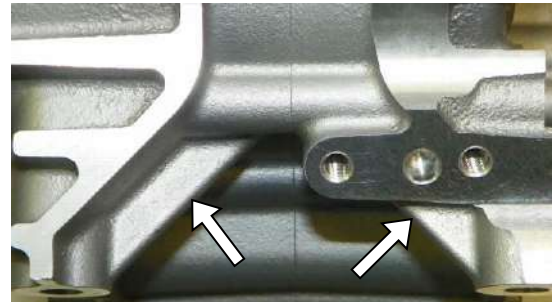
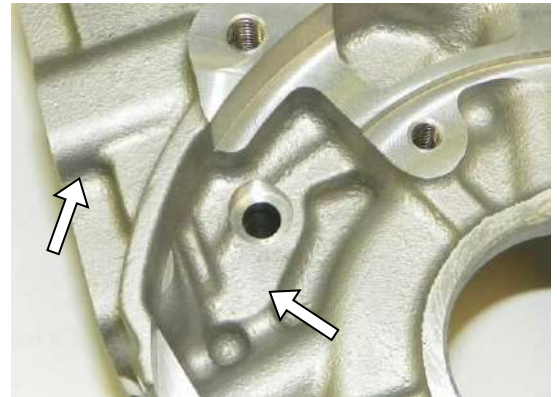
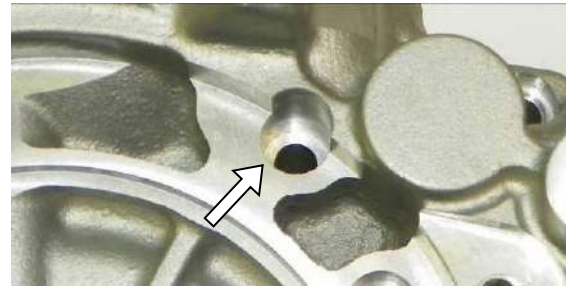
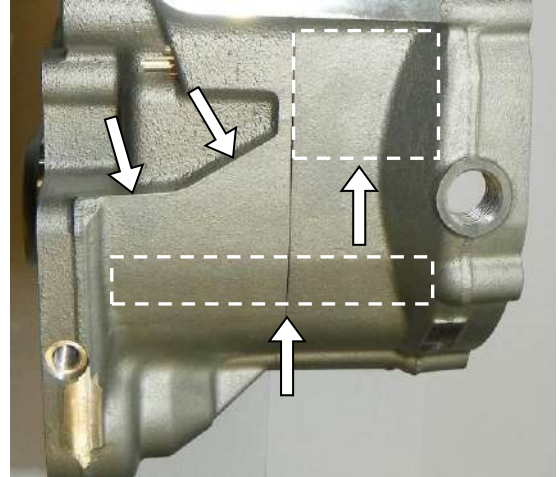
WIRING DIAGRAM (SELETTRA DIGITAL "K" IGNITION 2013)
 SCHEMA CIRCUIT ELECTRIQUE (ALLUMAGE SELETTRA DIGITAL "K" 2013)



CRANKCASE
CARTER

Old version - while stocks last
Vieille version - jusqu'à épuisement des stocks

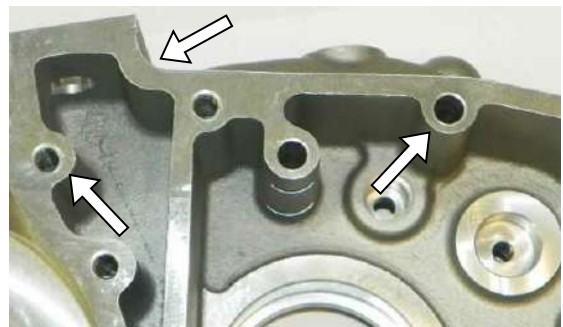
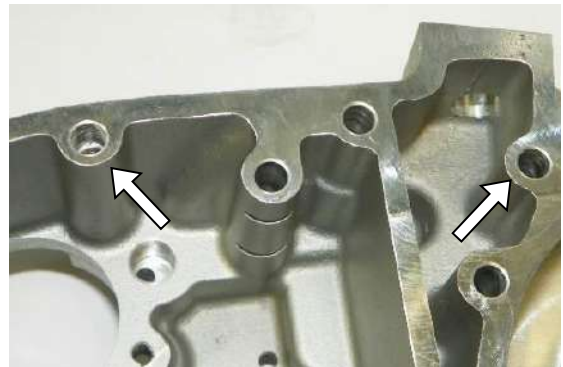
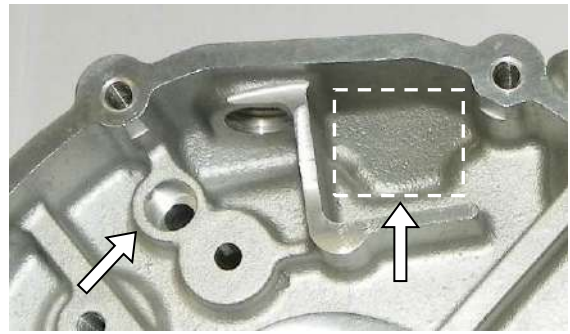
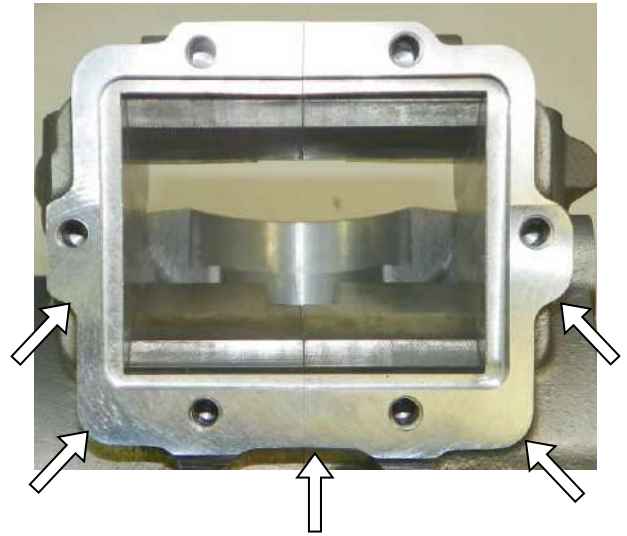
New version
Nouvelle version



CRANKCASE
CARTER

Old version - while stocks last
Vieille version - jusqu'à épuisement des stocks

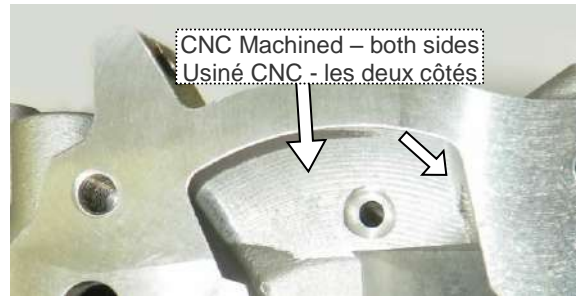
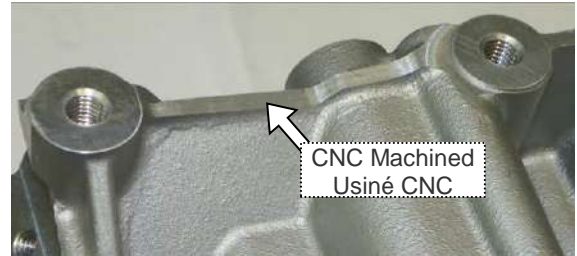
New version
Nouvelle version



CRANKCASE
CARTER

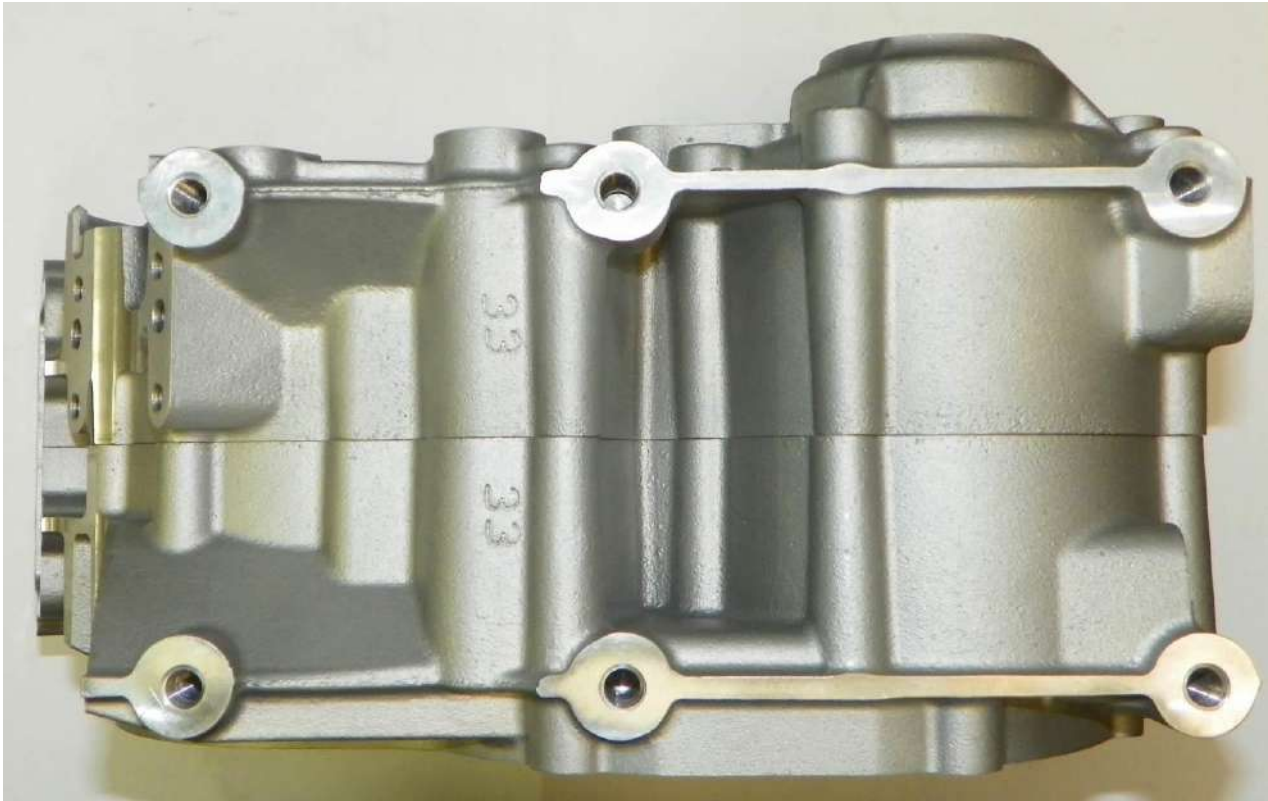
Old version - while stocks last
Vieille version - jusqu'à épuisement des stocks

New version
Nouvelle version

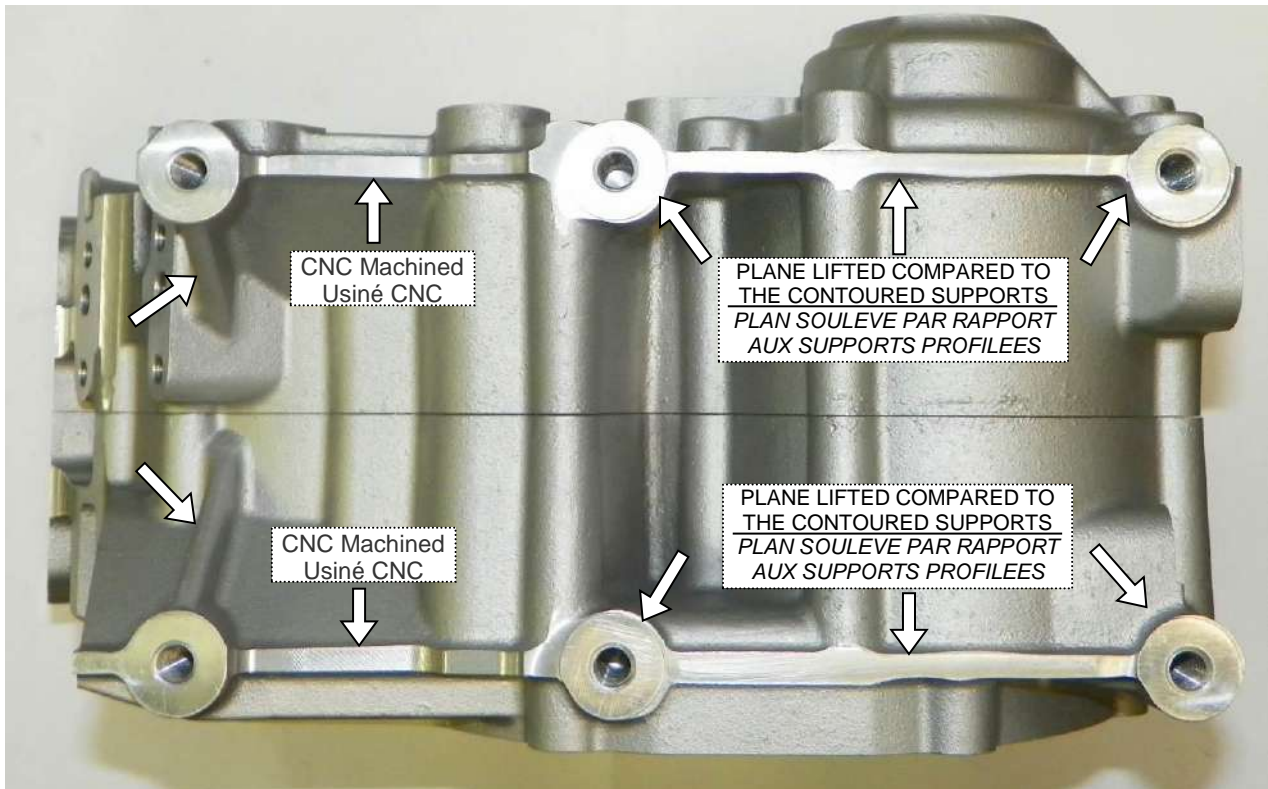


CRANKCASE
CARTER

Old version - while stocks last
Vieille version - jusqu'à épuisement des stocks



New version
Nouvelle version



SELECTOR COVER IDENTIFICATION
INDENTIFICATION DU COUVERCLE SELECTEUR

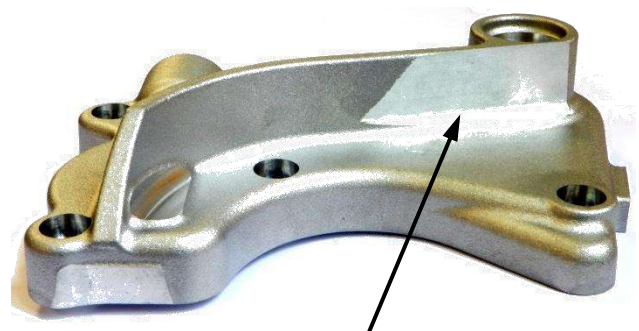
Old version
Vieille version



New version
Nouvelle version



ADDITIONAL CNC Machined
SUPPLÉMENTAIRES Usiné CNC

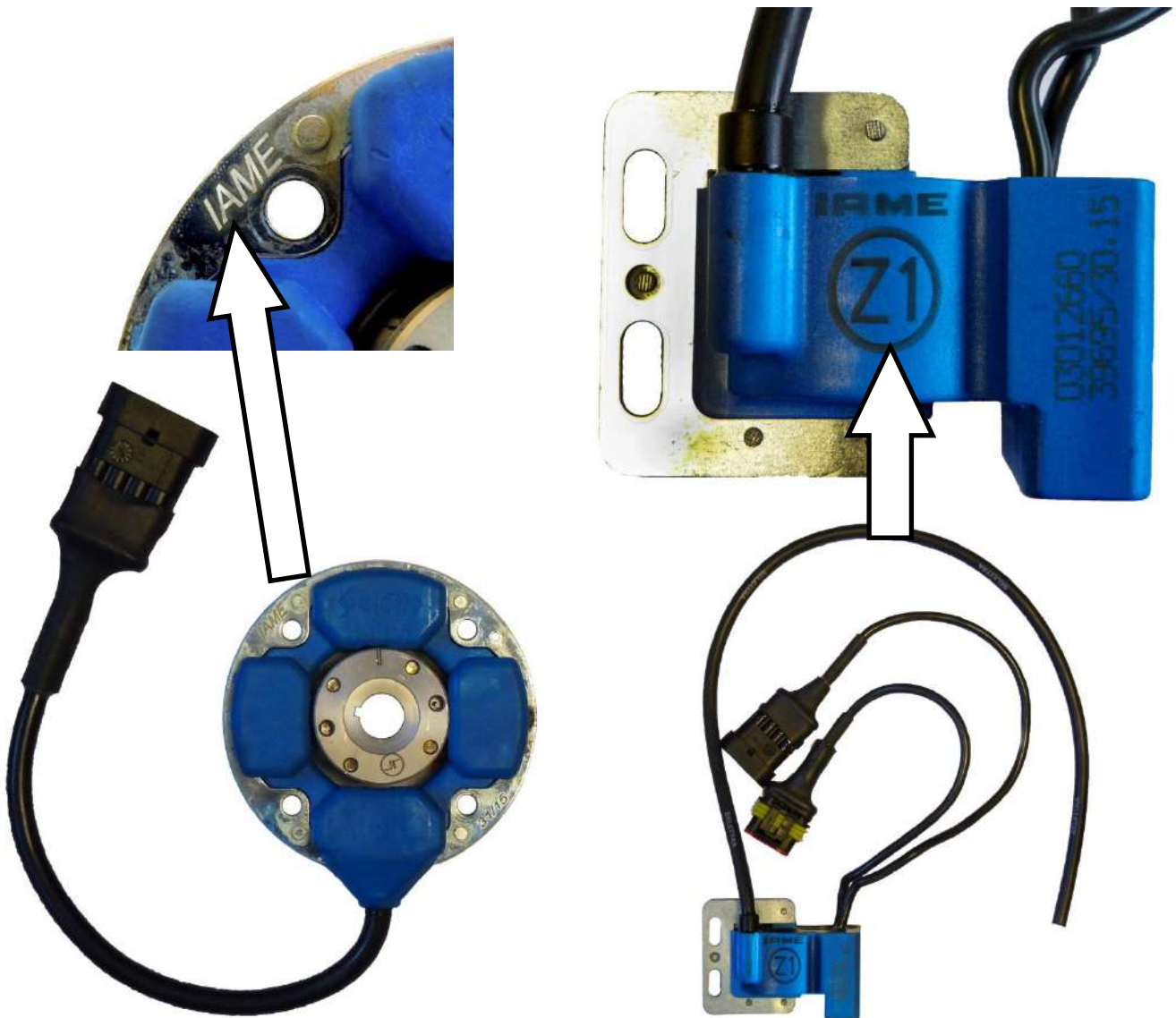


ADDITIONAL CNC Machined
SUPPLÉMENTAIRES Usiné CNC

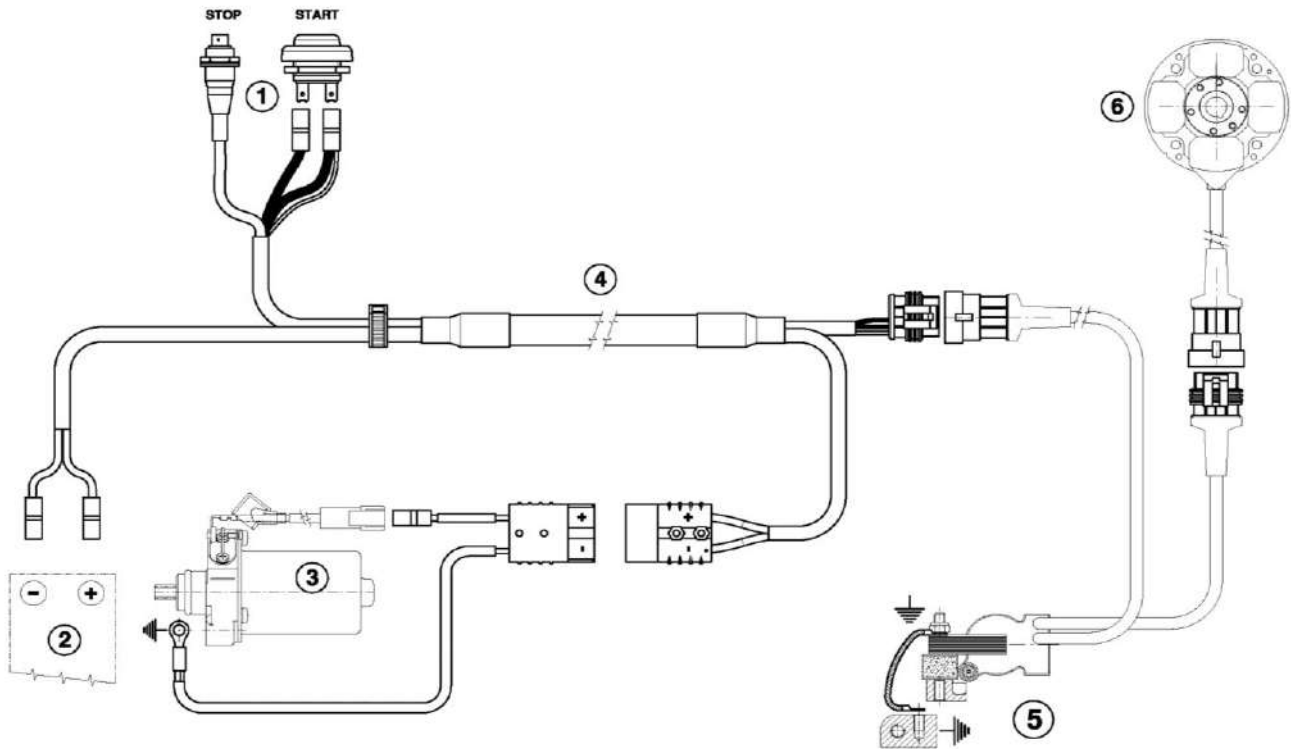
PHOTO COMPLETE ALTERNATIVE WIRING LOOM
PHOTO DU CABLAGE ELECTRONIQUE COMPLET



PHOTO OF SELETTRA ALTERNATIVE DIGITAL "S" IGNITION, WITH IAME MARKING
PHOTO DU SELETTRA DIGITAL "S" ALLUMAGE, AVEC MARQUAGE IAME



WIRING DIAGRAM (SELETTRA DIGITAL "S" IGNITION)
SCHEMA CIRCUIT ELECTRIQUE (ALLUMAGE SELETTRA DIGITAL "S")



- 1** - Push buttons Start & Stop / Bouton poussoir du démarreur
- 2** - Battery / Batterie
- 3** - Starter / Démarreur
- 4** - Wiring cable / Cablage électrique
- 5** - H.T. coil and Electronic Control Unit
/ Bobine A.T. et boîtier avec microprocesseur
- 6** - Ignition / Allumage

ALTERNATIVE STARTER GEAR
COURONNE DEMARREUR ALTERNATIVE



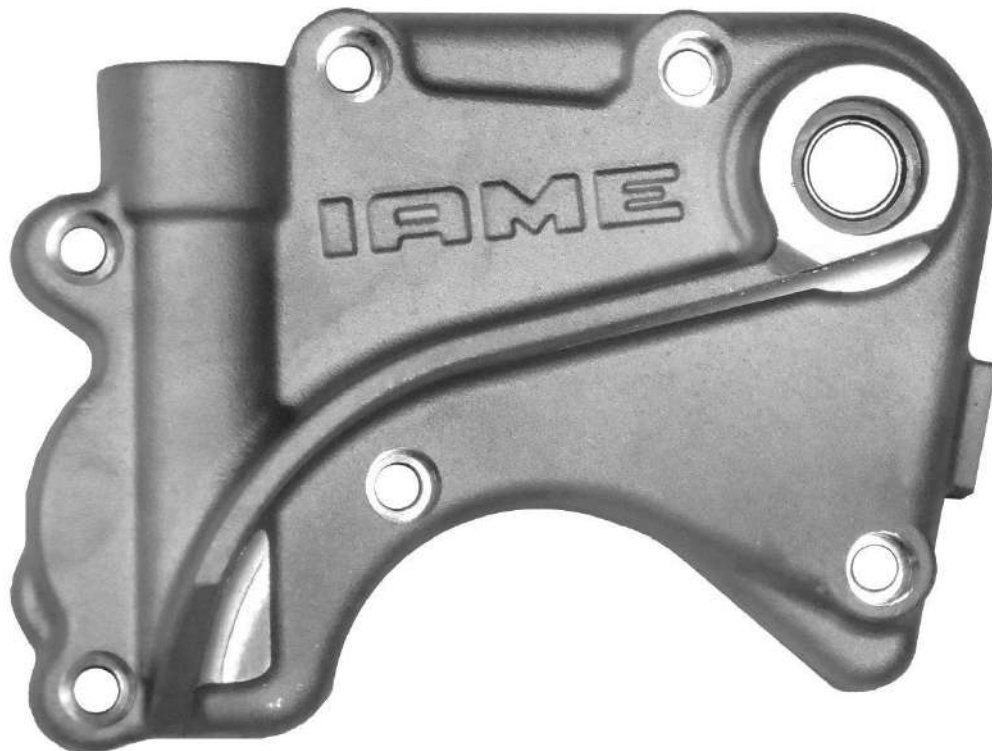
Current PRESELECTOR CONTROL SHAFT
Actuelle ARBRE COMMANDE PRESELECTEUR



New PRESELECTOR CONTROL SHAFT
Nouvelle ARBRE COMMANDE PRESELECTEUR



ALTERNATIVE SELECTOR COVER IDENTIFICATION
IDENTIFICATION DU COUVERCLE SELECTEUR ALTERNATIVE



Current SHIFT CONTROL LEVER
Actuelle LEVIER CHANGEM. VITESSE

New SHIFT CONTROL LEVER
Nouvelle LEVIER CHANGEM. VITESSE

